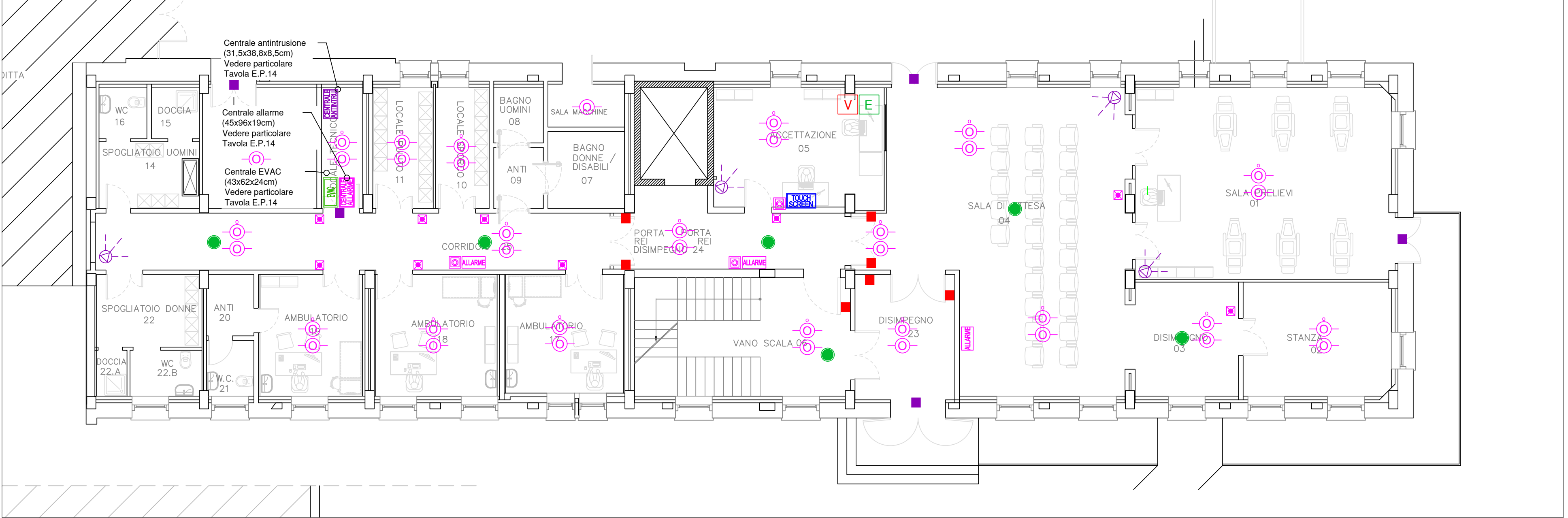





SCHEMA TOPOGRAFICO IMPIANTO RILEVAZIONE INCENDIO, EVAC, E SPECIALI PIANO TERRA - SCALA 1:100





LEGENDA


—  Centrale Allarme Antincendio


—  Cassonetto ottico/acustico Allarme Inc.


—  Pulsante allarme / incendio


—  Rivelatore ottico di fumo


—  Rilevatore di fumo nel controsoffitto con indicatore luminoso a LED a vista


—  Ripetitore ottico /allarme incendio


—  Pannello remoto rilevazione incendi


—  Elettromagnete


—  Microfono vigili fuoco


—  Centrale Allarme Antintrusione


—  Rivelatore antintrusione


—  Contatto magnetico


—  Pulsante apriporta

—  Server di sistema allarmi WINMAG

—  Centrale EVAC

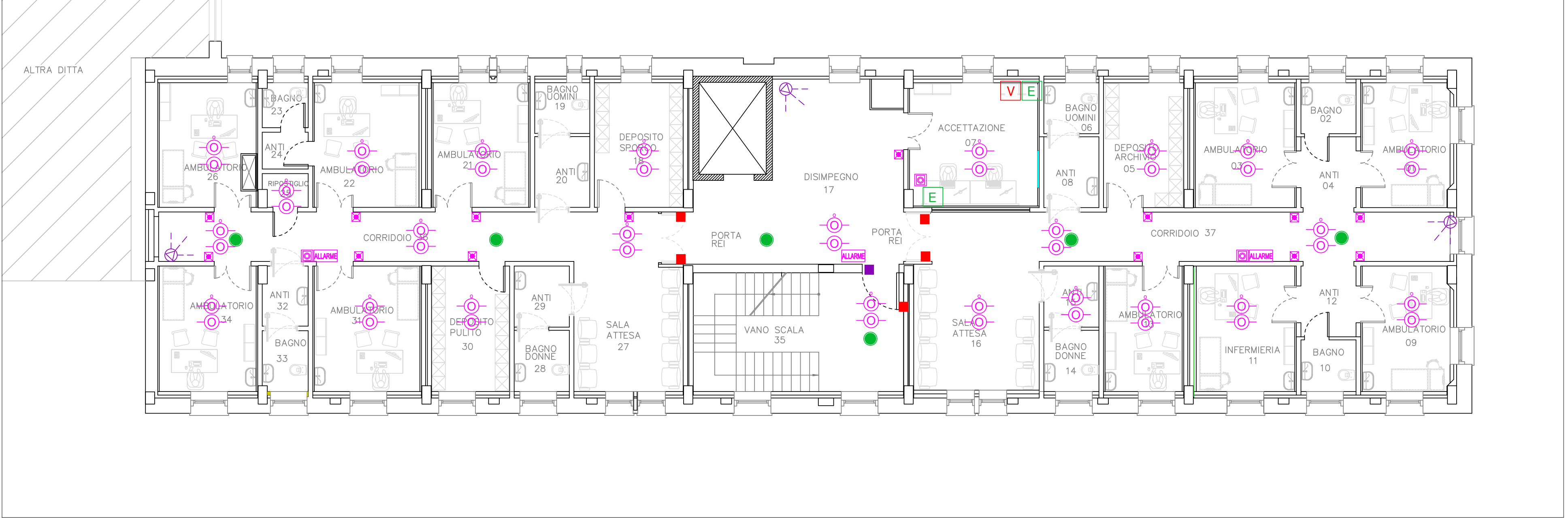
—  Diffusore Audio da incasso a controsoffitto

—  Microfono Evac

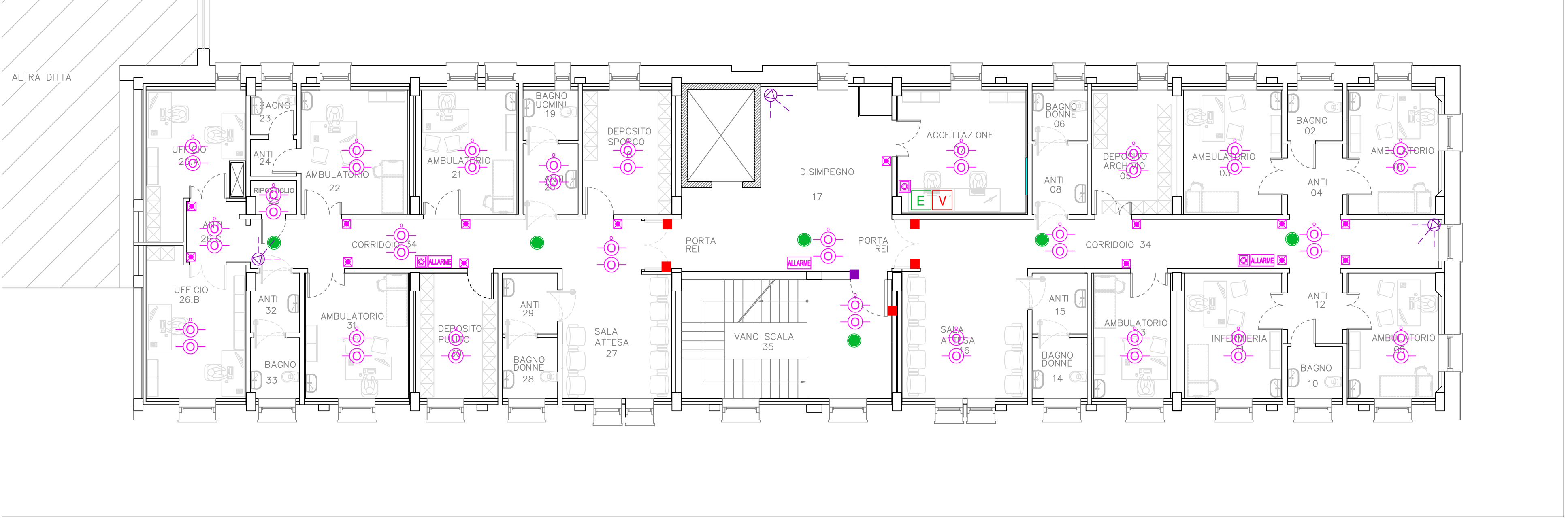
—  Tastiera comando video - impianto domotico


N.B. Come da norma vigente UNI 9795:2021 si deve rispettare i seguenti criteri in merito al valore di pressione sonora:
- Il livello acustico percepibile deve essere maggiore di 5dB(A) al disopra del rumore ambientale.
La percezione acustica da parte degli occupanti dei locali deve essere compresa fra i 65dB(A) e 118dB(A)

SCHEMA TOPOGRAFICO IMPIANTO RILEVAZIONE INCENDIO, EVAC, E SPECIALI PIANO PRIMO - SCALA 1:100




SCHEMA TOPOGRAFICO IMPIANTO RILEVAZIONE INCENDIO, EVAC, E SPECIALI PIANO SECONDO - SCALA 1:100






Finanziato dall'Unione europea
NextGenerationEU



REGIONE DEL VENETO



ULSS2
MARCA TREVIGIANA

Oggetto:

PIANO NAZIONALE DI RIPRESA E RESILIENZA (PNRR)
E PIANO NAZIONALE COMPLEMENTARE (PNC)
Missione 6 - SALUTE

COMPONENTE C1

M6C1 1.1

"Case della Comunità e presa in carico delle persone"

CASA DELLA COMUNITÀ
SEDE DI FARRA DI SOLIGO

PROGETTO ESECUTIVO

Elaborato:

SCHEMA TOPOGRAFICO IMPIANTO RILEVAZIONE INCENDI, EVAC E ANTINTRUSIONE

Scala: 1:100

Tavola: EP06

Progettazione:

CAPOGRUPPO R.T.P E
PROGETTO IMPIANTI
EVO ENGINEERING SRL - STP
Per. Ind. Bovo Mirco
Ing. Nardai Massimo

PROGETTO ARCHITETTONICO E
ACUSTICA
Ing. Giulio Campello

PROGETTO ARCHITETTONICO E
COORDINAMENTO PER LA
SICUREZZA IN FASE DI
PROGETTAZIONE
Geom. Sandro Campello

Data: Maggio 2023

Revisione: 01

Il Responsabile del Procedimento:

Azienda ULSS 2 Marca Trevigiana
dott. Lucio D'Este